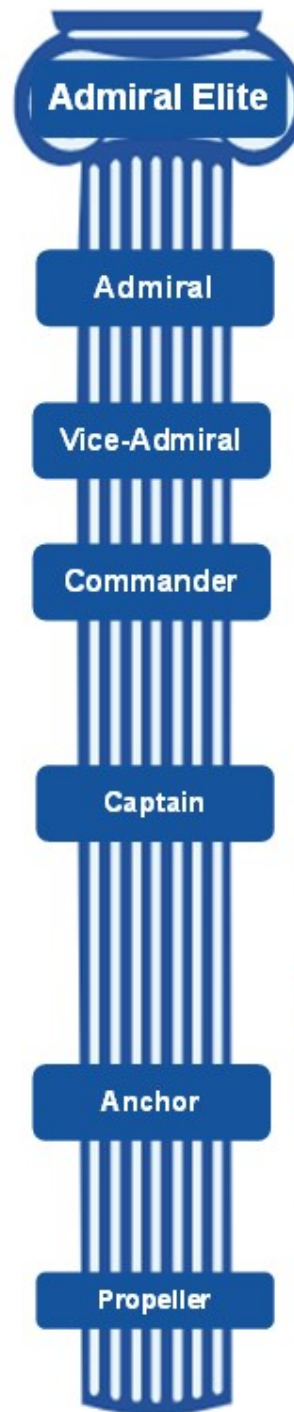


# Enterprise Benefits

Enterprise Club members go **above and beyond** a standard annual membership to receive special added benefits at each level.

Their generous contribution to the Chamber and its Continuing Education Grants, with their premium levels of membership, clearly **demonstrates their support of other local member businesses** by allowing the Chamber to continually expand its services and programs to everyone we serve.

They uphold our organization and the businesses we serve which is why we recognize them proudly and gratefully as **“Pillars of the Community.”**



**New! Your logo could be here!**



*Christian Brothers Automotive  
FASTSIGNS  
His Security & Technology*

*Knoxville Health Plans  
More Than Memories  
Slamdor*

**Enterprise Club: Pillars of Our Community**

Enterprise Club Benefits	Admiral Elite	Admiral	Vice Admiral	Commander	Captain	Anchor
Option for Customizable benefits package	•	•				
Donate a Standard 1-Yr Membership (Up to a \$635 Value)	•	•	•			
Sponsorship for Annual Auction Fundraiser Gala (*) includes table of 10	Presenting Level (\$5,000)*	Event Level (\$2,500) (4 tix)	Community Level (\$1,000) (2 tix)			
Sponsorship for Breakfast Speaker Series events included (*) includes table	Presenting – All (Up to \$6,000 or 4/yr)*	Event – All (Up to \$4,000 or 4/yr)	Community - All (Up to \$2,000 or 4/yr)	Community – 2 (Up to \$1,000)		
Sponsorship for Annual Business Expo (*) Includes Booth	Presenting Level (\$5,000)*	Event Level (\$2,500)*	Community Level (\$1,000)*	\$500* Level	Booth	Booth
Sponsorship for bi-annual New Member Orientation Sponsorship included	All (\$600)	All (\$600)	Choose 1 annually (\$300)			
Invitation & tickets to annual Regional Legislative Breakfast	10 (\$350)	6 (\$210)	4 (\$140)	2 (\$70)		
Invitation to present CE Scholarships & all related press coverage	All (Priceless)	All (Priceless)	2 (Priceless)	1 (Priceless)		
Complimentary Annual Auction tickets (to use or give to clients)	6 (\$450)	4 (\$300)	2 (\$150)	2 (\$150)	2 (\$150)	
Complimentary Individual Breakfast Speaker Series tickets (to use or give to clients)	6 (\$180)	4 (\$120)	2 (\$60)	2 (\$60)	2 (\$60)	
Color Business Card ad in Chamber Life in Farragut press (32,000 Impressions per Issue)	12 (\$1,000)	8 (\$800)	5 (\$500)	4 (\$400)	2 (\$200)	1 (\$100)
Linked Business Sponsor E-Blast Advertising (top of content)	10 wks (\$1,000)	8 wks (\$800)	5 wks (\$500)	4 wks (\$400)	3 wks (\$300)	2 wks (\$200)
Linked Business Spotlight E-Blast Advertising (mid-content)	10 wks (\$500)	8 wks (\$400)	5 wks (\$250)	4 wks (\$200)	3 wks (\$150)	2 wks (\$100)
Complimentary feature article in Chamber Life in Farragut press (32,000 Impressions per Issue)	4 (\$2,400)	3 (\$1,800)	2 (\$1,200)	1 (\$600)		
Complimentary Excel Directory or Mailing Label Set (no emails per CAN-SPAM laws)	Upon Request (Up to \$350 ea)	Upon Request (Up to \$350 ea)	Bi-Annual (Up to \$700)	Bi-Annual (Up to \$700)	Annual (Up to \$350)	Annual (Up to \$350)
Special recognition upon each annual renewal in print, digital, and social medias	Logo	Logo	Logo	Logo	Logo	Logo
Recognition at Annual Auction, Breakfast Speaker Series, Enterprise Banner at Networking's (Approx. 40-45/Year) & New Member Orientation	Logo	Logo	Logo	Logo	Logo	Logo
Recognition in the monthly Chamber Life in Farragut Press (384,000 Annual Impressions)	Logo	Logo	Logo	Logo	Logo	Logo
Recognition on all Chamber letterhead & In all Print Pieces	Name	Name	Name	Name	Name	Name
First right of refusal for additional sponsorship opportunities & annual networking opportunities	•	•	•	•	•	•

**Benefits continue on next page...**

Breakfast/Lunch with Board Chair & President	•	•	•	•	•	•
Logo recognition & Link on website	•	•	•	•	•	•
Personalized engraved statuette/plaque for display with public welcome at major event	•	•	•	•	•	•
Annual Standard Membership Dues Included (Up to a \$635 Value)	•	•	•	•	•	•
Additional Location/Branch of SAME company dues (\$125 per location/branch)	Unlimited	Unlimited	4 Locations	2 Locations	1 Location	
<b>Annual Investment</b>	<b>\$50,000+</b>	<b>\$25,000+</b>	<b>\$10,000+</b>	<b>\$5,000</b>	<b>\$2,500</b>	<b>\$1,250</b>

# Enterprise Benefits

## Ready to Go Above & Beyond?

Questions? Contact us, or if ready, return the form below to [julie@farragutchamber.com](mailto:julie@farragutchamber.com):

**Enterprise Level:** \_\_\_\_\_

**Business NAME:** \_\_\_\_\_

**Representative Name (Print):** \_\_\_\_\_

**Representative Name (Sign):** \_\_\_\_\_

**Will send LOGO:** \_\_\_\_\_ (initial)

**Date:** \_\_\_\_\_

Note: Like our Standard level chamber memberships, Enterprise Club memberships renew and are billed on an anniversary month basis. If you are upgrading to an Enterprise Club membership from an existing standard membership, we are happy to work with you to ensure the timing of your upgrade coincides with your current renewal month OR to discuss pro-rating your first year of Enterprise membership, whichever is more convenient.